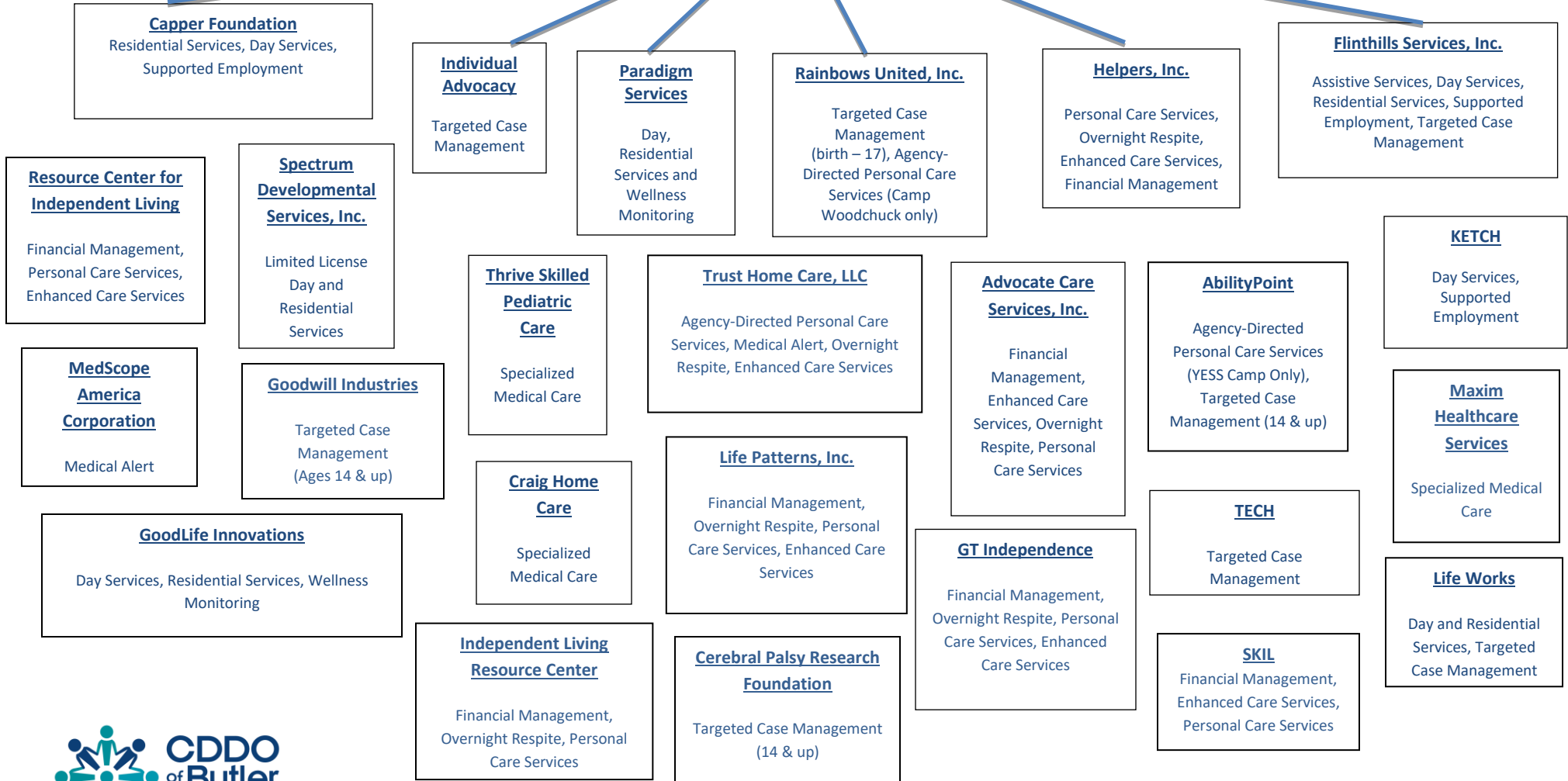


Kansas Department for Aging and Disability Services

CDDO of Butler County



Agency	Address	Phone
AbilityPoint	2919 W 2nd St, Wichita Ks 67203	(316) 943-1191
Advocate Care Services	151 S. Whittier Suite 1500, Wichita, KS 67207	(316) 260-9910
Capper Foundation	622 N. Haverhill Rd., El Dorado, KS 67042	(316) 320-7531
Cerebral Palsy Research Foundation	5111 E 21 st St N Wichita, KS 67208	(316) 688-1888
Craig Homecare	1100 E 1 st Street N, Wichita KS 67202	(316) 264-9988
Flinthills Services, Inc.	505 S. Walnut Valley Drive, El Dorado, KS 67042	(316) 321-2325
GoodLife Innovations	PO Box 14395 Lenexa, KS 66285	(316) 803-2831
Goodwill Industries	3351 N. Webb Rd, Wichita Ks 67226	(316) 744-9291
GT Independence	7300 W 100th St. Commerce Plz I 7th Floor, Overland Park, Ks 66210	(877) 659-4500
Helpers, Inc.	11806 W 77 th St, Lenexa, KS 66214	(913) 322-7212
Independent Living Resource Center	3033 W. 2nd St. N. Wichita, Ks 67203	(316) 942-6300
Individual Advocacy	3013 E US Hwy 54 Andover, KS 67002	(316) 613-3990
KETCH	1006 E. Waterman, Wichita, KS 67211	(316) 383-8700
Life Patterns	3300 SW 29 th St Suite 100 Topeka Ks 66614	(785) 273-7189
Life Works	1855 S. Rock Rd. Suite 129 Wichita, Ks 67207	(316) 201-1203
Maxim Healthcare Services	8301 E 21 st St N Ste 230, Wichita, KS 67206	(316) 201-9401
MedScope America Corporation	222 W. Lancaster Ave. Paoli, PA 19301	(800) 645-2060 X700
Paradigm Services	1235 Starkey, Augusta, KS 67010	(316) 247-3935
Rainbows United	3223 N. Oliver, Wichita, KS 67220	(316) 267-5437
Resource Center for Independent Living	1137 Laing, Osage City, KS 66523	(785) 528-3105
SKIL (Southeast Kansas Independent Living Resource Center)	1801 Main Parsons, KS 67357	(620)421-5829
Spectrum Developmental Services	210 W 2nd Apt A43 Andover KS 67002	(316) 207-8377
TECH	10 East 1st Ave, Hutchinson, Ks 67501	(620) 663-2216
Thrive Skilled Pediatric Care, LLC	530 N Ridge Rd Ste C Wichita, KS 67212	(316) 522-0608
Trust Homecare	6224 Shadybrook St, Wichita, KS 67208	(316) 683-7700