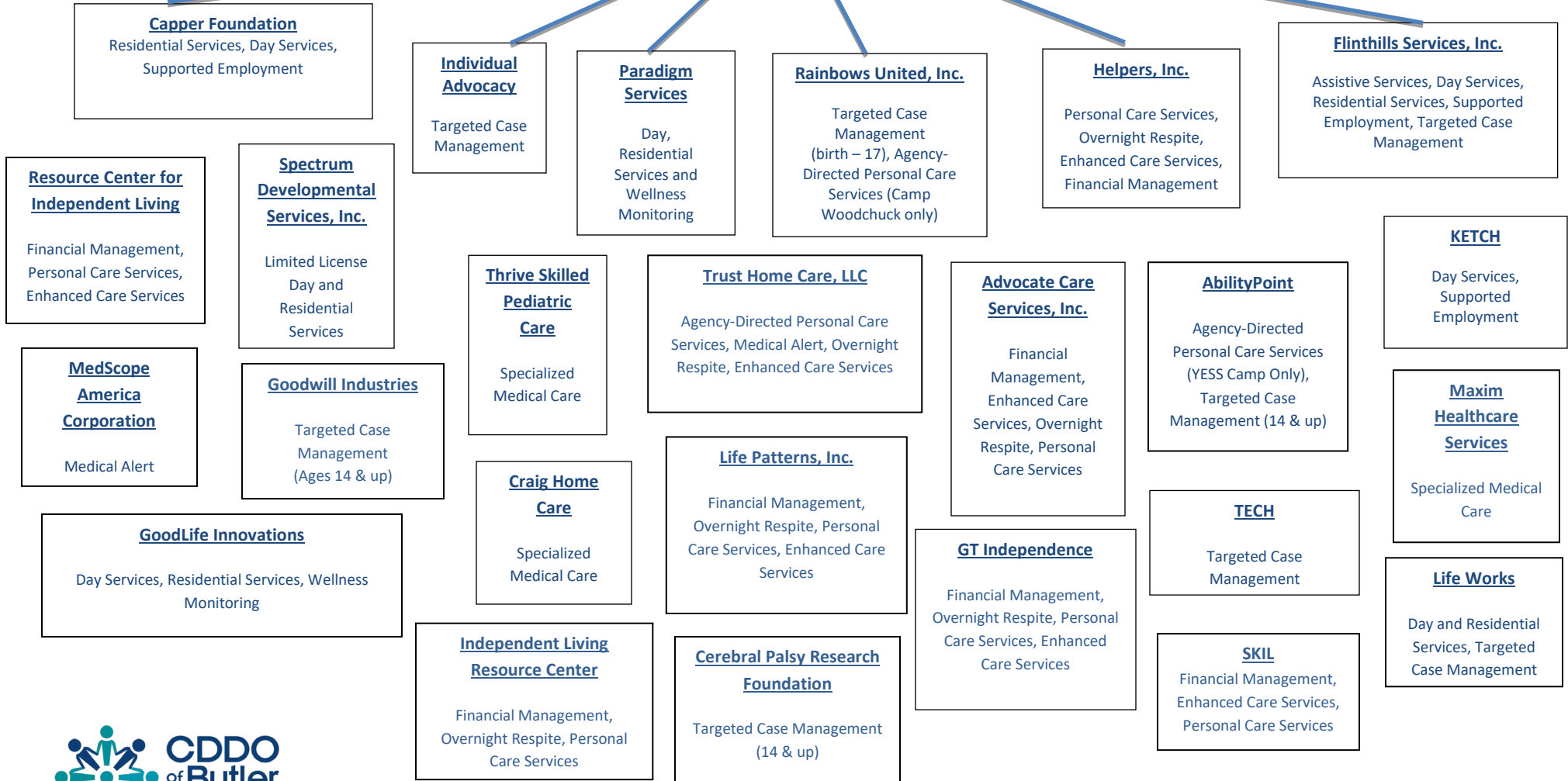


# Kansas Department for Aging and Disability Services

## CDDO of Butler County



<b>Agency</b>	<b>Address</b>	<b>Phone</b>
<b>AbilityPoint</b>	2919 W 2nd St, Wichita Ks 67203	(316) 943-1191
<b>Advocate Care Services</b>	151 S. Whittier Suite 1500, Wichita, KS 67207	(316) 260-9910
<b>Capper Foundation</b>	622 N. Haverhill Rd., El Dorado, KS 67042	(316) 320-7531
<b>Cerebral Palsy Research Foundation</b>	5111 E 21 <sup>st</sup> St N Wichita, KS 67208	(316) 688-1888
<b>Craig Homecare</b>	1100 E 1 <sup>st</sup> Street N, Wichita KS 67202	(316) 264-9988
<b>Flinthills Services, Inc.</b>	505 S. Walnut Valley Drive, El Dorado, KS 67042	(316) 321-2325
<b>GoodLife Innovations</b>	PO Box 14395 Lenexa, KS 66285	(316) 803-2831
<b>Goodwill Industries</b>	3351 N. Webb Rd, Wichita Ks 67226	(316) 744-9291
<b>GT Independence</b>	7300 W 100th St. Commerce Plz I 7th Floor, Overland Park, Ks 66210	(877) 659-4500
<b>Helpers, Inc.</b>	11806 W 77 <sup>th</sup> St, Lenexa, KS 66214	(913) 322-7212
<b>Independent Living Resource Center</b>	3033 W. 2nd St. N. Wichita, Ks 67203	(316) 942-6300
<b>Individual Advocacy</b>	3013 E US Hwy 54 Andover, KS 67002	(316) 613-3990
<b>KETCH</b>	1006 E. Waterman, Wichita, KS 67211	(316) 383-8700
<b>Life Patterns</b>	3300 SW 29 <sup>th</sup> St Suite 100 Topeka Ks 66614	(785) 273-7189
<b>Life Works</b>	1855 S. Rock Rd. Suite 129 Wichita, Ks 67207	(316) 201-1203
<b>Maxim Healthcare Services</b>	8301 E 21 <sup>st</sup> St N Ste 230, Wichita, KS 67206	(316) 201-9401
<b>MedScope America Corporation</b>	222 W. Lancaster Ave. Paoli, PA 19301	(800) 645-2060 X700
<b>Paradigm Services</b>	1235 Starkey, Augusta, KS 67010	(316) 312-1039
<b>Rainbows United</b>	3223 N. Oliver, Wichita, KS 67220	(316) 267-5437
<b>Resource Center for Independent Living</b>	1137 Laing, Osage City, KS 66523	(785) 528-3105
<b>SKIL (Southeast Kansas Independent Living Resource Center)</b>	1801 Main Parsons, KS 67357	(620)421-5829
<b>Spectrum Developmental Services</b>	210 W 2nd Apt A43 Andover KS 67002	(316) 207-8377
<b>TECH</b>	10 East 1st Ave, Hutchinson, Ks 67501	(620) 663-2216
<b>Thrive Skilled Pediatric Care, LLC</b>	530 N Ridge Rd Ste C Wichita, KS 67212	(316) 522-0608
<b>Trust Homecare</b>	6224 Shadybrook St, Wichita, KS 67208	(316) 683-7700